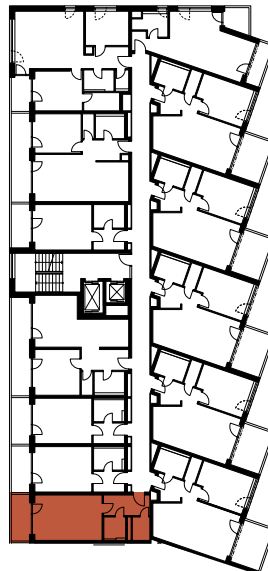


Position of apartment  
Section C / 6<sup>th</sup>



## General information

### Apartment area

1	hall	6,50 m <sup>2</sup>
2	chamber	2,80 m <sup>2</sup>
3	bathroom	3,20 m <sup>2</sup>
4	living-room	20,80 m <sup>2</sup>

**Total 33,30 m<sup>2</sup>**

4	loggia	5,80 m <sup>2</sup>
	cellar	2,60 m <sup>2</sup>

**Total flat area\* 41,70m<sup>2</sup>**

\* Plocha bytu vrátane vonkajších plôch (balconyov, lodží, terás)

### Object orientation

